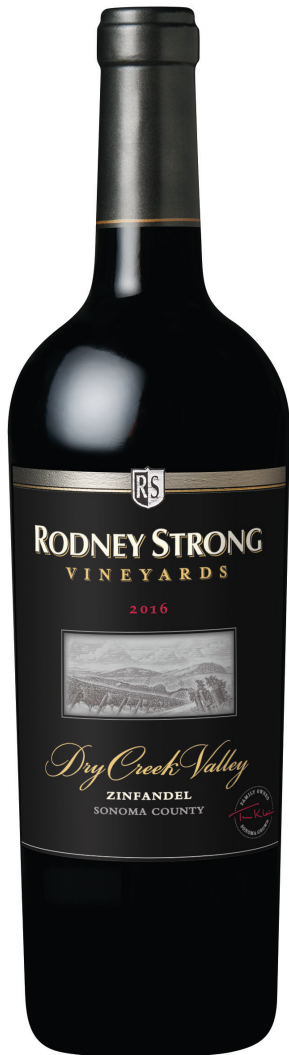


RODNEY STRONG  
ZINFANDEL  
DRY CREEK VALLEY

2016 ZINFANDEL  
ESTATE VINEYARDS



**OUR STORY**

At Rodney Strong Vineyards we focus on modern artisan winemaking, exclusively from Sonoma County, California. Our family-owned winery is committed to quality wines and to protecting our resources for the future. We are solar powered, certified sustainable, practice Fish Friendly Farming and were the first to officially offset our carbon footprint in Sonoma County.

**HISTORY**

The Dry Creek Valley is legendary for producing great Zinfandel, and we were fortunate to discover an excellent vineyard there in 2007 that has been enhancing our Knotty Vines Zinfandel ever since. In recent years, that vineyard has truly begun to shine. We decided to bottle a small amount separately to highlight its unique character which reflects the briary, peppery nature of Dry Creek Zinfandel.

**THE VINTAGE & VINEYARD**

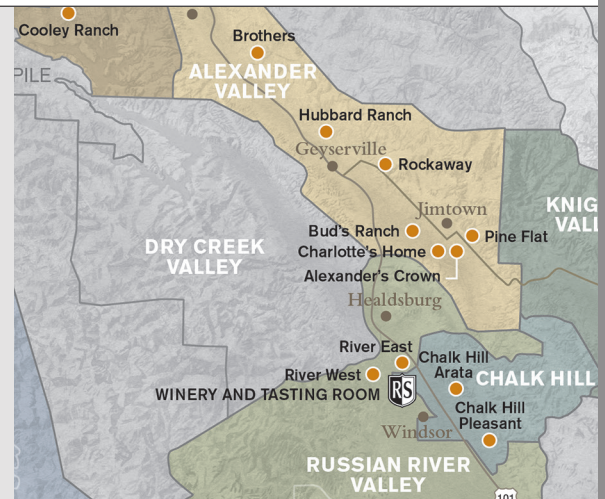
The 2016 growing season was about as close to ideal as we can get. We received about an average amount of rain over Winter, with only one big storm coming through in early March that topped off soil moisture. Spring was very pleasant, so the vines got off to a great, albeit early, start. Average temperatures continued through summer, with the occasional heat spike. Warm temperatures continued into the Fall, so the Zinfandel harvest started earlier than normal. Dry Creek Valley harvest kicked off in mid-September.

**TASTING NOTES**

Ruby red colored, with fresh aromas of ripe blackberries, cherry pie, black pepper and dusty earth, this full bodied wine was aged for 18 months in primarily French oak barrels, which added layers of toast and baking spices. Elegant and silky, this wine has refined tannins and is extremely well balanced. Enjoy this Zinfandel now with Manchego cheese, bacon wrapped dates or spiced barbecue dishes, or cellar for enjoyment over the next two to four years.

  
**RODNEY STRONG**  
VINEYARDS  
RODNEYSTRONG.COM

**WINEMAKER** Justin Seidenfeld  
**ALCOHOL** 15%  
**TA** 0.35g/100 mL  
**PH** 4.00  
**APPELLATION** Dry Creek Valley;  
Sauers Grove Vineyard  
**VARIETAL** 100% Zinfandel  
**CELLAR & FERMENTATION** 18 months in 10% American and 90% French oak barrels, 55% new





# UPSHOT

SONOMA COUNTY

## RED WINE BLEND



### UPSHOT DEFINITION

The final or eventual positive outcome or conclusion of a discussion, action, or series of events.

### OUR UPSHOT

The end result of our winemaker's passion for blending flavorful, deeply nuanced and unique wines. Exclusively from vineyards in Sonoma County, predominantly Alexander Valley and Knights Valley, our Red Blend offers a sumptuous, almost magical outcome of the growing season and winemaking process.

### TASTE PROFILE

This rich, supple wine bursts with blackberry and dark cherries with hints of spice followed by lush, rounded tannins and a lingering finish.

### OUR STORY

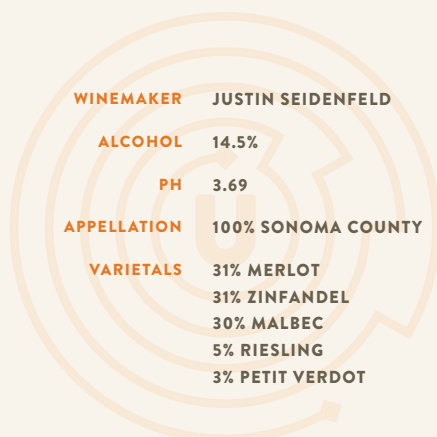
Rodney Strong Vineyards is dedicated to crafting world-class wines that capture the essence of Sonoma County. Rodney Strong sustainably farms 14 estate vineyards and produces wines from Sonoma County's finest appellations—Alexander Valley, Russian River Valley, Chalk Hill, Dry Creek Valley, Knights Valley, Petaluma Gap, and Sonoma Coast. We aspire to conserve and protect the environment in all winery operations through sustainable practices, solar power, and fish friendly farming.

### THE 2017 VINTAGE

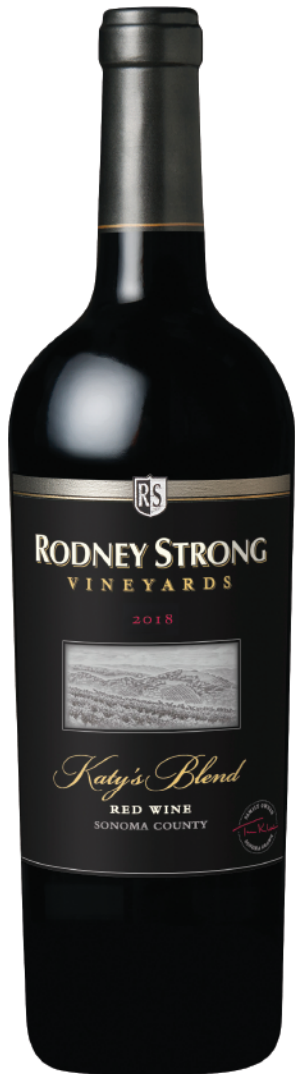
Record-breaking rainfall kicked off the 2017 season, filling the water table to capacity and replenishing soils. A mild spring brought bud break at the usual time while a hot summer concluded on Labor Day weekend with a heat wave of 110° F, causing harvest to move up by a week or so. Most of the fruit was all picked before the heartbreaking October fires and vintners share a positive outlook on the 2017 wines. The fruit has rich color, defined flavors and exceptional quality across varieties.



**RODNEY STRONG**  
VINEYARDS  
RODNEYSTRONG.COM



SONOMA COUNTY  
RED BLEND  
KATY'S BLEND  
2018



**OUR STORY**

*Since 1959, our passion has been to craft best in class wines in our sustainable winery to share with friends and family. Our family-owned winery is committed to quality wines and to protecting our resources for the future. We are solar powered, certified sustainable, practice Fish Friendly Farming and we were the first winery in Sonoma County to offset our carbon footprint. With an eye on the future, innovation in the cellar and the vineyards is at the heart of all that we do.*

*Our Wine Club exclusive red blend is named for our Wine Club Coordinator, Katy Turner. Celebrating nineteen years with Rodney Strong Vineyards, Katy is the heart and soul of our club.*

**HISTORY**

Rodney Strong wines are crafted from meticulously farmed blocks of some of the best vineyards in Sonoma County. Areas within certain vineyards are hand harvested, fermented separately and aged in the finest oak barrels. After about six months, each lot is tasted and graded and only the lots that display complexity, richness and intensity are considered for bottling.

**THE VINTAGE & VINEYARD**

The 2018 growing season was dry through spring with well below normal precipitation. Cooler weather dominated this vintage with only two short, relatively mild heat spikes through the entire growing season. Summer days were very pleasant in Sonoma County with highs in the 70s and 80s and with August having even warmer temperatures. With everything in balance, we harvested September 22 - October 17, 2018.

**TASTING NOTES**

A powerful red blend from the hillsides of Alexander Valley and high elevation vineyards in rugged Northern Sonoma, this wine is lush with wild dark berries, plum and minerality. The wine has a nice balance between fruit, earth and finishes with long and lingering vanilla and baking spices. The soft, supple and mature tannins give this wine a strong backbone while the 18 months of barrel aging have softened the wine enough to enjoy now.



**RODNEY STRONG**  
VINEYARDS

WINEMAKERS Justin Seidenfeld

ALCOHOL 14.5%

TA 0.61g/100mL

PH 3.73

APPELLATION Sonoma County

VARIETAL 30% Zinfandel, 28% Cabernet Sauvignon,  
24% Malbec, 11% Petit Verdot, 7% Cabernet Franc

CELLAR & FERMENTATION 18 months in French  
oak barrels, 50% new



RODNEYSTRONG.COM